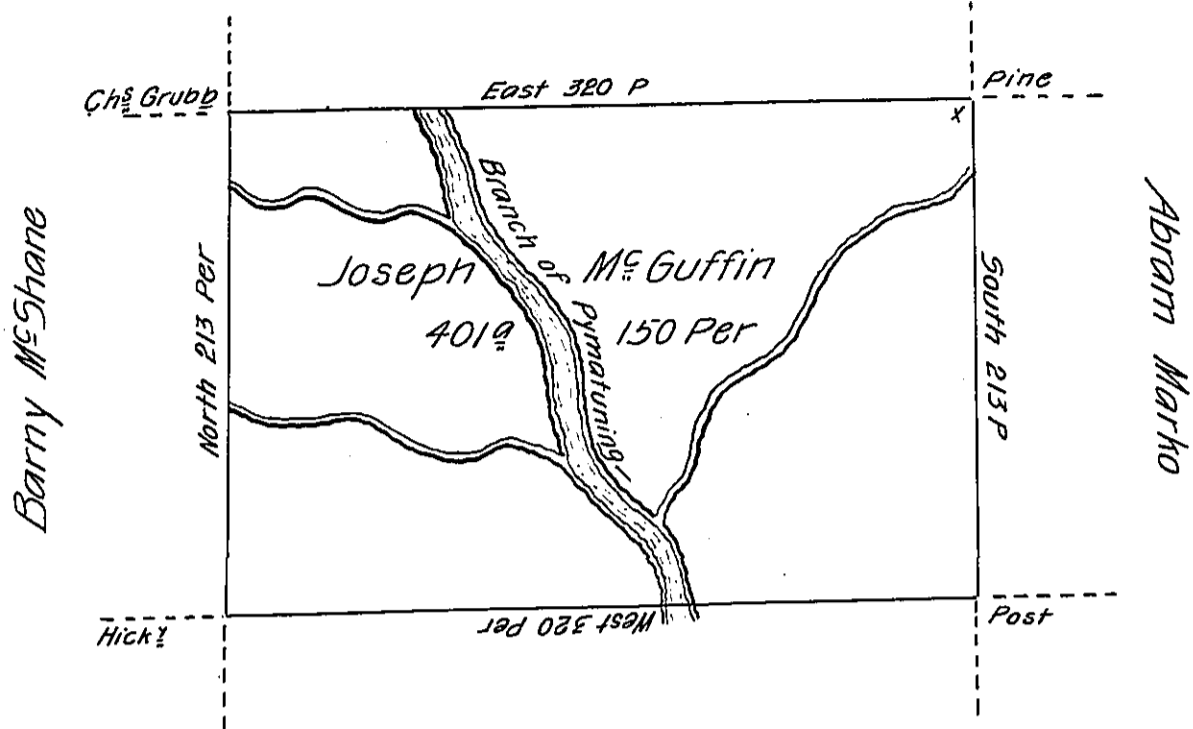


Robert McGee



Christopher Marshall

Situate on the West side of French Creek in Allegheny County  
 Containing 401 1/2 150 Perches & allowance of Six Per Cent for Roads &c.  
 Surveyed the 1<sup>st</sup> day of June 1795. In Pursuance of a Warrant dated the 30<sup>th</sup>  
 of May 1792.

Wm Power Dy. Sr.

To Daniel Broadhead Esq.  
 Surveyor General.

IN TESTIMONY that the above is a copy of the original remaining on file in  
 the Department of Internal Affairs of Pennsylvania, made  
 conformably to an Act of Assembly approved the 16th day of  
 February, 1833, I have hereunto set my Hand and caused  
 the Seal of said Department to be affixed at Harrisburg,  
 this second day of January 1906.

*Lauchlin Curran*  
 Secretary of Internal Affairs.